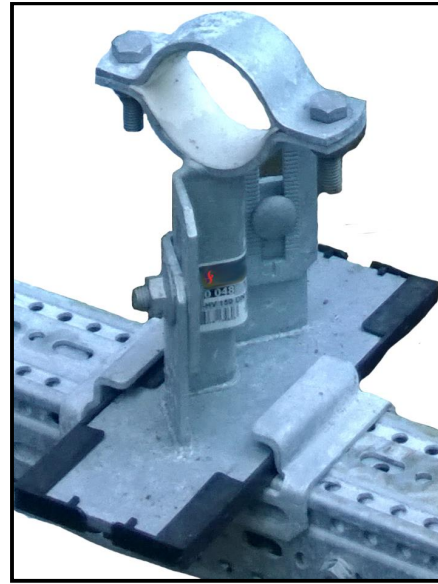


Type JP155 3 In 1 Height Adjustable Support. Guide – Slide – Anchor

Application Constructed from High Corrosion Protected Steel and with a Polyamide 6.0 & Glass Reinforced Fibre black slide plate, suitable for external location even in marine environments (Corrosion Category 5 Available). This adaptable product can through the use of different plates (detailed below) be used as an Anchor, A 1/2 Way+Guide or indeed a 3/4 Way+Skid.

Design For use when connecting onto Framo 80 or 100, or Steel I beams and either supporting high temperature pipework internally, or any pipework externally, coated as standard to C4 and optionally can be coated to C5 for harsh offshore locations.
 When being used in combination with thermal expansion solutions these supports have a low friction coefficient which will help to keep the anchor forces as low as possible.

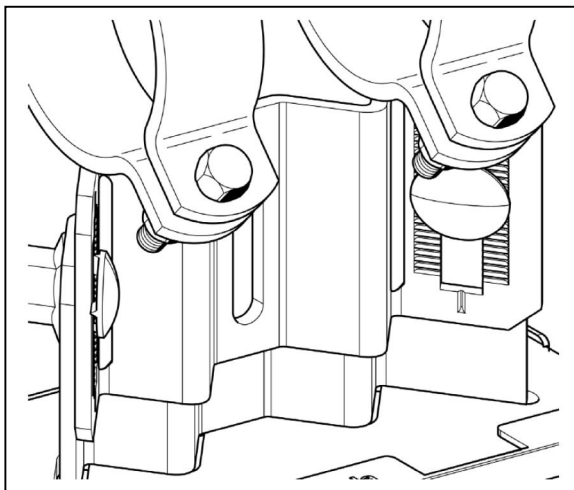


As there are multiple configurations of JP155 available, please use the table to construct a code that tells us what you require.

E.G.
 The code:
JP155-100-L-F80-D-G works out as a 100mm NB slide, with the low height range adjustment, to fit on Framo 80 channel, with a double Pipe Clamp and is being used as a Guide.

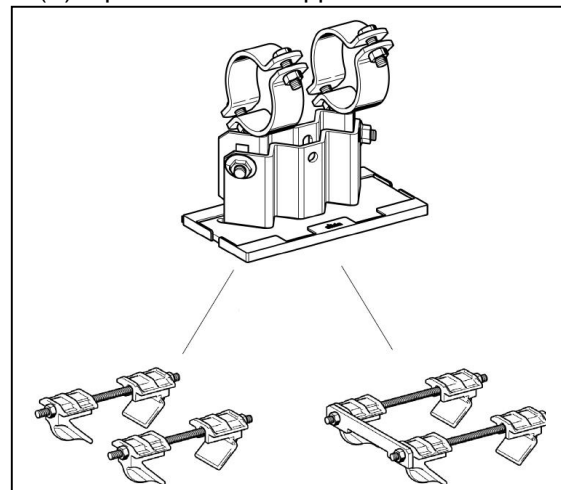
NB	Height Adjustment	Mounting	Single Or Double Pipe Clamp	Anchor, Guide or Skid?
25	Height Range Low (L). 88.5mm To 113.5mm	Mounting Kit (F80) To Suit Framo 80	Single Pipe Clamp (S) 150mm NB Max	(A) Anchor . Fixed point adaptor, see table for maximum load capabilities
32				
40				
50	Height Range Medium (M). 116mm To 168.5mm	Mounting Kit (F100) To Suit Framo 100	Double Pipe Clamp (D)	(G) Guide . Adaptor to restrict movement to the axial plane (including +/-2mm lateral deflection)
65				
80				
100	Height Range High (H). 171mm To 223.5mm	Mounting Kit (I) To Suit Steel I Beams, Please Tell Us The Flange Width		(S) Skid . supplied without adaptors to allow limited sliding along the beam as well as across it
125				
150				
200				
250				
300				

	NB	Height Adjustment	Mounting	Single Or Double Bracket	Anchor Guide Or Skid
JP155	100	L	F80	D	G



50mm Fine height Adjustment

(S) Pipe Shoe Skid Supplied As Standard.



(G) Guide Adaptor

(A) Anchor Adaptor

Anchor Load Ratings

Single Pipe Clamp (S)

NB (mm)	Load Rating With "A" Anchor Adaptor With Height Adjustment "L" (kN)	Load Rating With "A" Anchor Adaptor With Height Adjustment "M" (kN)	Load Rating With "A" Anchor Adaptor With Height Adjustment "H" (kN)
25	9.1	8	6.3
32	8.8	7.9	6.2
40	8.6	7.8	6.2
50	8.2	7.6	6
65	7.7	4.4	5.9
80	7.3	7.2	5.7
100	6.5	6.9	5.5
125	5.7	6.5	5.2
150	4.7	6.1	4.9

Double Pipe Clamp (D)

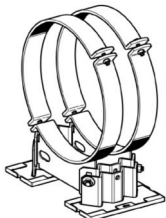
NB (mm)	Load Rating With "A" Anchor Adaptor With Height Adjustment "L" (kN)	Load Rating With "A" Anchor Adaptor With Height Adjustment "M" (kN)	Load Rating With "A" Anchor Adaptor With Height Adjustment "H" (kN)
25	14.3	8.5	7.3
32	14.1	8.5	7.2
40	14	8.5	7.2
50	13.9	8.4	7.1
65	13.6	8.4	7
80	13.5	8.4	6.9
100	13.1	8.3	6.7
125	12.7	8.3	6.5
150	12.3	8.2	6.3
200	11.6	8.1	5.9
250	10.8	8	5.5
300	10.1	7.9	5.1

Friction Coefficient

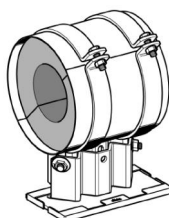
When used as supplied with as the standard (S)Slide or with the (G)Guide Adaptors and located on hot dipped galvanised \mathbb{F} beams or Framo channels, the friction coefficient is **0.2 μ** .

Additional Items

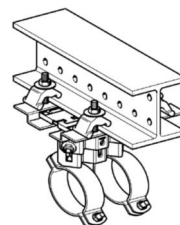
The JP155 is available in multiple configurations; please contact us for more information.



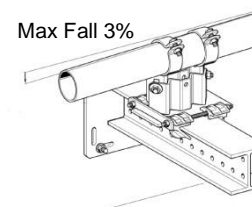
Double Slide & Double Bracket For Large Bore Pipe.
 350mm > 600mm.



All products above available with insulation insert as required.
 (Special Request Item . Long Lead Time)



Suspension kit for (G)Guide Adaptor to allow suspension of a guided support.



Height Adjustment allows for 3% Max Fall.

Example Installations



STOURFLEX

J&P Supplies Ltd
Junction Road, Audnam,
Stourbridge, West Midlands,
DY8 4YH
Tel: 01384 393329
Fax: 01384 440212
www.stourflex.co.uk



This project supplied by Stourflex utilised a range of prefabricated Framo supports with low friction JP155 guides to work in conjunction with a range of expansion joints and JP155 anchors.

JP155-200-L-F80-D-G
200mm JP155 mounted on Framo 80 with the guide adaptor.

JP155-80-L-F80-D-G
80mm JP155 mounted on Framo 80 with the guide adaptor.



Close up of a JP155-200-L-F80-D-A
200mm JP155 mounted on Framo 80 with the anchor adaptor.



Framo frame with JP150 & JP155 guides mounted on Framo 80



Series of Framo frames with JP150 & JP155 guides mounted on Framo 80, at the corner the JP155s are supplied without any adaptors to allow the skid to move out with the JP120 lateral expansion joints as required.