



STOURFLEX®

J & P Supplies Ltd

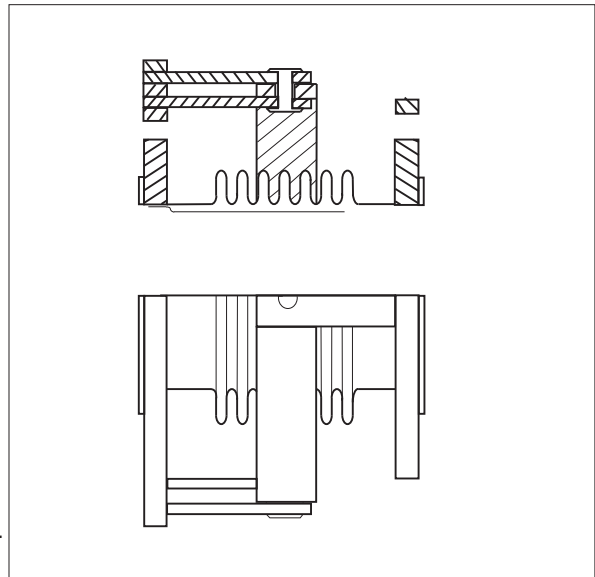
Expansion Joints & Pipeline Equipment

Type JP126 Gimbal Expansion Joint Flanged.

Specification Gimbal expansion bellows consisting of stainless steel grade 321 bellows fitted with carbon steel oval flanges drilled to BS 4504 NP16. Complete with carbon steel gimbal ring assembly.

Application Stourflex gimbal expansion joints are used in sets of two along with angular expansion joints to accommodate complex lateral movements in pipework installations. This movement occurs due to thermal expansion or contraction or building settlement. They are suitable for use on L.T.H.W., M.T.H.W., H.T.H.W., steam and other hot liquids and gases.

Maximum working temperature 300°C.
 Maximum working Pressure 16 bar at 120°C.
 Stourflex gimbal expansion joints should not be used at their maximum working temperature and pressure respectively.
 Maximum test pressure = 1.5 x working pressure or 1.5 x flange rating whichever the lower.



Part Number	N.B. (mm)	Angulation (Degree)	Overall Length (mm)	Angular Spring Rate	Working Pressure @120°C (bar)	Cold Test Pressure (bar)
JP126-50-16	50	5	133	10.7	16	24
JP126-65-16	65	5	133	13.8	16	24
JP126-80-16	80	5	133	46.5	16	24
JP126-100-16	100	5	133	75.7	16	24
JP126-125-16	125	6.5	199	50.1	16	24
JP126-150-16	150	6.5	199	94.3	16	24
JP126-200-16	200	7	212	135	16	24
JP126-250-16	250	7	212	241	16	24
JP126-300-16	300	7	212	379	16	24

Stainless steel grade 321 internal flow sleeve fitted as standard.

Where service conditions above 300°C or 16 bar exist or where additional movement is required non standard variations of the **Type JP126** are available if required.

Alternative flange drillings are available.

Stourflex gimbal expansion joints are supplied at their maximum overall length and must not be extended. Gimbal expansion joints must be securely anchored and adequately guided to ensure their correct performance. Omitting anchors and guides may result in failure of the system.

All Stourflex products should be installed in accordance with our fitting instructions.