



STOURFLEX®

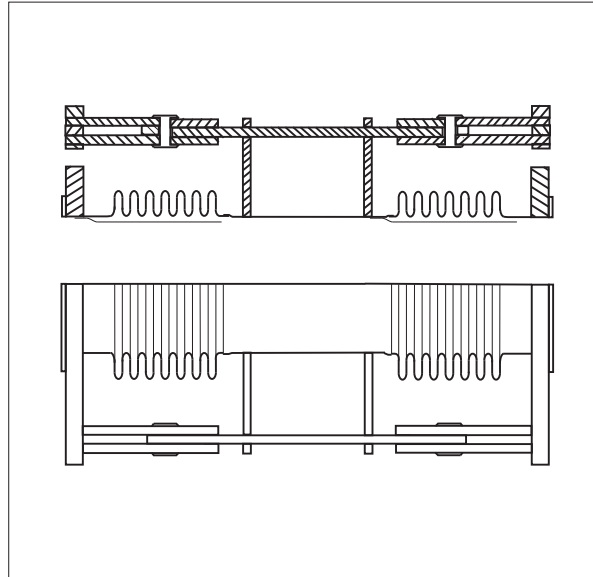
J & P Supplies Ltd

Expansion Joints & Pipeline Equipment

Type JP124 Articulated Expansion Joint Flanged.

Specification Double hinged articulated expansion joint consisting of two stainless steel grade 321 bellows welded to carbon steel centre tube fitted with carbon steel oval flanges and hinge assembly drilled to BS4504 PN16

Application Stourflex double hinged articulated expansion joints are generally installed in changes in pipework direction and will accommodate lateral movement in only one plane. This movement occurs due to thermal expansion or contraction or building settlement. Due to their construction they are particularly suitable where large movements or high operating pressures are involved. They are suitable for use on L.T.H.W., M.T.H.W., H.T.H.W., steam and other hot liquids or gases.



Maximum working temperature 300°C.
 Maximum working pressure 16 bar at 120°C.
 Stourflex articulated expansion joints should not be used at both their maximum working temperature and pressure respectively.
 Maximum test pressure = 1.5 x working pressure or 1.5 x flange rating whichever the lower.

Part Number	N.B. (mm)	Total Movement (± mm)	Overall Length (mm)	Lateral Spring Rate (N / mm)	Working Pressure (bar) @120°C	Cold Test Pressure (bar)
JP124-50-16	50	50	750	3.5	16	24
JP124-65-16	65	50	750	4.6	16	24
JP124-80-16	80	50	750	16.4	16	24
JP124-100-16	100	50	750	27.2	16	24
JP124-125-16	125	50	1000	10.6	16	24
JP124-150-16	150	50	1000	18.7	16	24
JP124-200-16	200	50	1000	17.4	16	24
JP124-250-16	250	50	1000	32.3	16	24
JP124-300-16	300	50	1000	94	16	24

Stainless steel grade 321 internal flow sleeve fitted as standard.

Where service conditions above 300°C or 16 bar exist or where additional movement is required non standard variations of the **Type JP124** are available if required.

Alternative flange drillings are available.

Stourflex articulated expansion joints are supplied at their maximum overall length and must not be extended. Articulated expansion joints must be securely anchored and adequately guided to ensure their correct performance. Omitting anchors and guides may result in failure of the system.

All Stourflex products should be installed in accordance with our fitting instructions.